

Wellington Monthly



Pioneering education
to serve and help shape
a better world.

Vol I, Issue VI

June 2023

Latest Update on School Construction

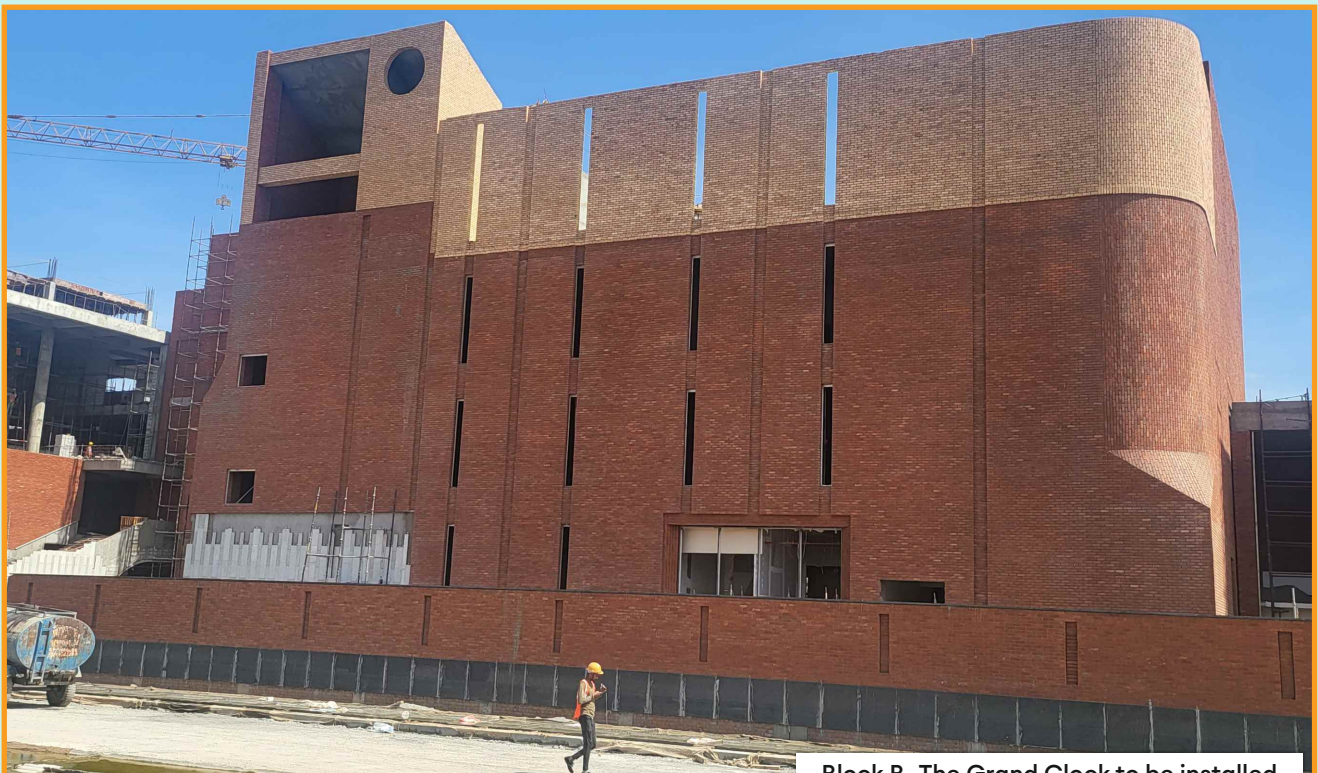
As we approach our opening in September 2023,
Wellington College International Pune looks resplendent in the sunshine.



Block A near completion



Block A- Boundary Wall



Block B- The Grand Clock to be installed

Iain Henderson

2nd June 2023

Visits Oxford Golf Club to discuss future synergies

Iain Henderson, Deputy Head (Wellington College International), visited Oxford Golf Course in early June. WCI Pune intends to strengthen its associations by onboarding the finest institutions in Pune and partnering with them for an exchange of talent and expertise. This would create a competitive climate within the pupils and allow them to realize their potential with access to the elite clubs.



Wellington College International Pune will draw upon its legacy of Heritage and Wellbeing



Wellington College International Pune aims to reflect a fusion of heritage and wellbeing as it prepares young minds for 21st-century needs, writes Dr. Murray Tod, Founding Master.

Article in educationtimes.com by Dr. Murray Tod

Wellington College International Pune (WCI Pune), opening in September 2023, will provide a holistic education to pupils from Pre-Nursery age to Year 9. From August 2024, the school will also open to older year groups, following international examination curricula. The Wellington family of schools, starting with The Wellington College in the UK (founded in 1853) and now operating across China, Thailand, and India, can lay claim to be pioneering in their holistic approach. All Wellington Colleges are known to have a strong international perspective. Wellington College International Pune will also reflect a fusion of heritage and modernity, with the educational philosophy of the curriculum, facilities, and teaching methods in tune with the challenges of preparing young people for 21st-century needs. Indeed, the pioneering spirit and heritage of Wellington College are represented in the Pune campus, projecting the values and cultural ethos of the family of schools. WCI Pune will be 'authentically Wellington', within an overt Pune setting, in every regard.

All Wellington Colleges are 'values-led' organisations and WCI Pune will continue this tradition. We aim for our students to become happy, kind, and responsible global citizens. The five core values of being a Wellingtonian are Courage, Respect, Integrity,



Kindness, and Responsibility and these will be present in the way we think and behave, in what we expect of ourselves, and also in each other. These values are a critical part of what brings us together as a unified global organisation and the Wellington Identity encapsulates what makes an education in any of our partnership schools so special: the unique thread which binds together all pupils who walk through our gates. We call it the Wellington Identity and in Pune we want our pupils to be INSPIRED (to leave school as interested and interesting people), INTELLECTUAL (with a Wellington education only the start of an exciting and life-long journey of learning), INDEPENDENT (developing skills to allow them to be the 'thought leaders' and 'game-changers' of the future), INDIVIDUAL (attaining a positive journey to greater self-awareness) and INCLUSIVE (discarding concepts of privilege and elitism and seeking to engage with local, national and international communities, with a burning desire to do good in the world).

A driving motivation for WCI Pune, in tandem with its cultural ambitions and values, is to promote a 'holistic education', one which offers an all-encompassing approach to learning and teaching, with educators addressing the broad needs of the pupils (socially, ethically and academically) in an integrated programme.

In 2006, Wellington College was the first school in

the UK to introduce a course in happiness and wellbeing. This innovative decision sparked enormous interest both nationally and internationally and, over 15 years later, Wellington schools remain committed to a programme whose aim is simply to promote the excellence of the young people under our care. It is an exciting development to introduce this educational ethos to Pune. WCI Pune will offer senior pupils a Wellbeing programme centered on how we learn and practice dispositions or 'virtues'. The wellbeing provision, embedded in the academic timetable, will focus young peoples' minds on the habits of purposeful and good living, concentrating on elements such as Physical Health, Positive Relationships, and The World: Living Sustainably. We will link this innovative curriculum to broader angles of our Global Leadership programme, allowing pupils to have the opportunity to mold their leadership skills through integrated practices of Well-being and global outreach.

The advantages of this holistic approach to education, within the international sphere, appear far-reaching and enterprising. Ultimately, however, all educators should aspire to a belief, a vision, in the ability of all young men and women to challenge themselves and pursue high-level goals in all their endeavors. At WCI Pune, we will prepare our pupils to be both Indian and international in outlook and to embrace all cultures, guiding principles that are enmeshed in the DNA of all committed Wellingtonians across the globe. Whatever one's perspective and cultural background, it is clear that the educational provision for young people in 2023 must be of paramount significance. Indeed, as a world leader once stated - "Education is the most powerful weapon which you can use to change the world." - Nelson Mandela, 2003.

For admission-related inquiries, please visit pune.wellingtoncollege.in or speak to our team at +91 99799 71258.

Iain Henderson Visit to

1st June 2023

DY Patil College of Education, Akurdi

A motivational guest lecture was delivered by Iain Henderson, Deputy Head (Wellington College International) at Dr D Y Patil College of Education, Pune



Iain Henderson & Ms. Sharvary Govande

Redefining Education

3rd June 2023

- An " Education Community Meeting" was held at Wellington College International Pune in early June and it proved to be a stimulating day of discussion, debate and networking.

Convenor: Conrad Botha
Founding Head, Early Years

Theme: Nurturing Lifelong Learners in an Ever-Evolving Global Landscape

What education do we need for our pupils to move learning beyond the 21st century? What is the intention of education in the current context of transformation? How should learning be organised to support student agency? What is a curriculum for modern-day India?

With the world rapidly changing – education must keep up with the ever-evolving landscape. Communities everywhere are undergoing deep transformation, and this calls for progressive approaches to education to foster the competencies that individuals, societies, and economies need for tomorrow. This means moving beyond traditional subjects, to focus on enabling learning environments and on new approaches to learning for greater global unity and harmony. These questions inspired the theme for our first Wellington College International Pune community education meet - Redefining Education: Nurturing Lifelong Learners in an Ever-Evolving Global Landscape.

Across the globe, we have seen great progress in expanding learning opportunities from inclusion and challenging social and cultural norms to intent, implementation, and impact. Yet we must draw on these experiences of what has worked well, what needs further investigation, and where we have experienced the greatest influences to chart a new course forward. Access is not enough; we need a new focus on the quality of education and the relevance of learning, on what pupils are actually learning. Schooling and formal education are essential to widening the angle in order to foster learning throughout life.

This is why we must come together to think big and redefine education in a changing world. For this, we need to discuss, debate, and dialogue across our community and that is the goal of this gathering of educators – to be both aspirational and inspirational.

Panel Discussion 1

Theme: Proactive Strategies to Support Wellbeing through Holistic Assessment

3rd June 2023

In India, as in other countries, there is an increasing interest in the personal, social, and emotional development of pupils and the impact it has on enriching and improving the experiences, opportunities, and academic outcomes across different ages and phases of life at school.

Panelists



Fiona Carter

Director of Education
Wellington College International



Seema Tanwar

President BJP Education Cell Pune
Managing Director Kanvas Kidz Preschools
President of the Women's Club Kharadi
and Territory Head Early Childhood
Association Pune



Anita Kaul

Principal Trinity Junior College
SELIN Chapter Director Pune
Professor, and Member of IDYM Group



Neelam Londhe

Principal Vardhaman English
Medium School and Junior College
Pune



Gayatri Chadwa

Founder Sva Eternal Partner at In_Sanity
Special Educator, Emotional Intelligence Life Coach
and G100 Maharashtra Chair for Inclusion and Diversity Wing

Panel Discussion 2

Theme: Continuous Provision: What is it and how can it motivate students for deeper learning?

3rd June 2023

Continuous provision refers to all of the different provisions, resources, and media which are available to learners every day. Carefully planned continuous provision will enable pupils to learn skills, will challenge their thinking, and help them to embed concepts. It further allows the learning environment, sometimes referred to as the third teacher, to capture a learner's interest, engages them in active and deep learning, motivates their desire to achieve, and develop the skills and knowledge required for success in their learning journey.

It is through successfully planned continuous provision that we are able to activate and keep learners motivated, using a range of well-selected media in teaching, with natural opportunities for differentiation and challenge.

Panelists



Winifred Bhalerao
MA M,Ed DSM
Principal St Paul's School Pune



Katie Byrne
Founding Head of Junior School
Wellington College International Pune



Sharvary Govande
Principal Designate
Universal Public School



Monika Gupta
Principal, Pushpa International School



Vishakha Gupta
Principal, Beacon High School Pune
(A K-12 School Affiliated with CBSE)

Dr. Murray Tod

9th June 2023

Visit to FC City Football Academy

Dr. Murray Tod visited FC City Football Academy in early June and discussed potential collaborations with FC City.

In addition, he discussed partnering together in several areas including co-hosting tournaments, participating in ongoing competitions with other schools, coaching at the school, and coaching other sports such as (tennis/cricket/basketball).

It was an excellent meeting and wonderful to see the young players (below) in action!



The Holy Blessings Puja

12th June 2023

This unique event, which featured meaningful traditions, was attended by the entire Wellington College International Pune Team. We embarked on a purposeful journey, seeking blessings that hold great significance. The Navagrahas (9 planets) symbolize this significant ceremony, guiding us as we embark on our educational journey.



Our latest article featured in VISTARA Inflight Magazine - July 2023



WELLINGTON
COLLEGE
INTERNATIONAL
PUNE

Realise your potential

**A Premier
K-12 International School**



pune.wellingtoncollege.in

An Outstanding School Education of All-round Excellence
In Partnership with **Wellington College UK**

Wellington College International Pune (WCI Pune), will be a co-educational school for 800 pupils. The Wellington campus is nestled on the banks of the Mula-Mutha river in Kharadi, Pune, initially providing a first-class holistic education to pupils from Pre-Nursery to Year 9. From August 2024, the school will also open to older year groups, following prestigious international examination curricula.

Our vision for WCI Pune is to offer a world class education, coupling excellence in academic achievement to a progressive holistic outlook. We aim to embrace the Wellington values of **Courage, Respect, Kindness, Integrity** and **Responsibility**, of pertinence to both our international and Indian roots, embedding them in every facet of school life and shaping the global outlook of all our pupils.

Our innovative approach leverages upon the illustrious history and heritage of Wellington College UK, capturing inspirational Wellingtonian attributes and connecting them to the invigorating Pune culture. It is an exciting educational marriage, a fusion of UK practices to the enticing Maharashtra landscape.

WCI Pune offers bright, ambitious and globally-minded pupils an education that is inspiring, transformative, and impactful. We wish to nourish the pastoral development and wellbeing of all in the Wellington community, providing an environment for young learners to grow and develop. Joining a growing partnership of Wellington schools, in the UK, China, Thailand and now India, our pupils, parents and colleagues will be active members of a vibrant international community; we are all united in our pursuit of global excellence and cultivating a rich seam of outstanding young learners.



"We aspire to create a caring, international community that develops well-rounded individuals with strong values and the skills to thrive within an ever-changing global society."

Dr MURRAY TOD
Founding Master
WCI Pune

**Pioneering education
to serve and help shape
a better world.**

OPENING SEP '23
+91.997 997 1258

ADMISSION ENQUIRIES ARE WELCOME
admissions.pune@wellingtoncollege.in



Poona Club Visit

27th June 2023

**Scott Bryan,
Managing Director
(Wellington College
International) & Fiona
Sutherland, Head of
Marketing (Wellington
College International)
in conversation with
Mr. Sunil Handa-
President, Poona
Club.**



The Poona Club Ltd, one of the oldest and most prestigious clubs in the country, has a glorious history dating back to 1886.

The club was registered with the Registrar of Companies on 31st August 1931 and presently has over 6000 Members in various categories.

The club spans 3 locations – the Main Club on thirteen and half acres of land, the Swimming Pool and Squash Court Complex on two and half acres and the Golf Course on 96 acres, all in prime areas in the heart of the city.

