

# Wellington Monthly

**Pioneering education  
to serve and help shape  
a better world.**

Vol I, Issue VII

July 2023

## Dr. Murray Tod speaks at the British Business Group Mumbai

On Monday 3rd July, Dr Tod was delighted to address the British Business Group (BBG) in Mumbai. The presentation focused on his reflections concerning the current educational landscape, in India and internationally, and he highlighted elements of change and continuity in education in the past few decades. The presentation was followed by an insightful Q & A session, in which BBG members posed illuminating queries, and networking opportunities during the buffet dinner. The whole event was splendidly organised, offering a superb occasion to illustrate Wellingtonian values in a Mumbai setting.



## Radio One 94.3 FM

5th July 2023

# Book Donation Campaign

To support RadioOne's library initiative "Padhenge toh Badhenge" (If you read, you will grow) for underprivileged children, Wellington College International Pune donated 100 books.

This event was a resounding success, attended by Dr. Murray Tod, Founding Master, Scott Bryan (Managing Director, Wellington College International), and Fiona Sutherland (Head of Marketing, Wellington College International).

The leadership team of Wellington College International Pune discussed literacy and education's transformative power.

You can hear their opinions by clicking the following links:

**Scott Bryan**

<https://www.instagram.com/p/Cugs929ICIA/>



**Dr. Murray Tod**

<https://www.instagram.com/p/CuZIRaDoFTY/>




**Fiona Sutherland**

<https://www.instagram.com/p/CujQjpegYe-/>



14th July 2023


# MyGate Society Campaign



WELLINGTON  
COLLEGE  
INTERNATIONAL  
PUNE

**Realise  
your potential**

[pune.wellingtoncollege.in](http://pune.wellingtoncollege.in)



**An International Day-School from  
Pre-Nursery to Year 9**

Wellington College International Pune (WCI Pune), will be a co-educational school for 800 pupils. The Wellington campus is nestled on the banks of the Mula-Mutha river in Kharadi, Pune, providing a first-class holistic education.

**An Outstanding School Education of  
All-round Excellence**  
In Partnership with **Wellington College UK**

**Opening - 1 Sep '23**

Admission Enquires are welcome  
+91.99799 71258  
[admissions.pune@wellingtoncollege.in](mailto:admissions.pune@wellingtoncollege.in)

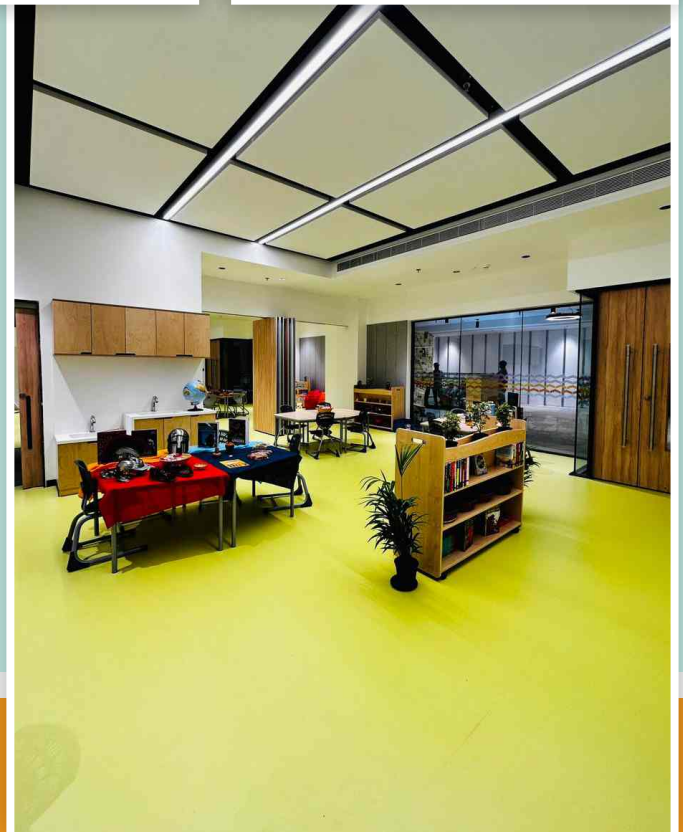
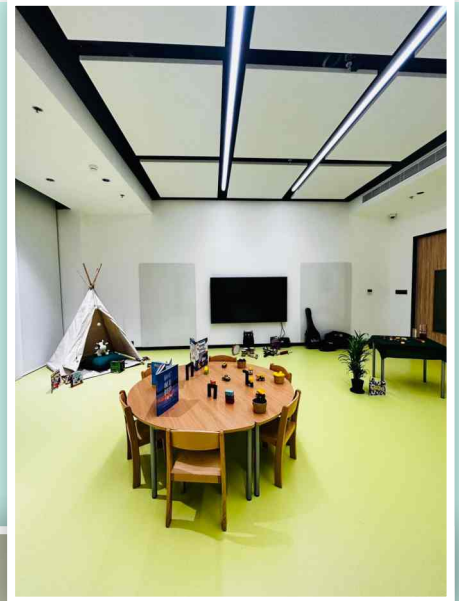
[Enquire Now](#)

MyGate is an India-based security software development company headquartered in Bangalore, India. It was launched in 2016 and currently serves 100 cities in India.

In July we ran an exclusive campaign to 50,000 homes across Pune.

# Latest Update On Our Classroom Setup

In preparation for our opening in September 2023, we look forward to welcoming our pupils to our splendidly appointed classrooms. As the pictures illustrates, these classrooms will offer superb learning spaces and we will encourage our pioneering staff and pupils to fully personalise them!



## Know Our Faculty

With impressive qualifications in Psychology and Educational Leadership, Jessica brings passion to her teaching. She is interested in holistic well-being, enjoys practising yoga, and meditation, and exploring different cultures during her travels. As she begins her journey in India, Jessica looks forward to making a positive impact on the lives of our pupils through her exceptional educational skills. She is also excited to immerse herself in the local community, forming genuine connections with the vibrant area and its inhabitants.

We warmly welcome Jessica to Wellington College International Pune!

#KnowOurFaculty



### Meet **Jessica Faulkner**

Junior School Class Teacher

A talented educator with 5 years of teaching experience in the UK and a deep commitment to holistic education, Jessica's expertise will enrich the learning journey of our pupils. Her Master's degree in Psychology and Post Graduate Diploma in Leadership in Education reflects her dedication to nurturing young minds.



# What are the Fundamentals of Learning at Wellington College Early Years Pune?



**Conrad Botha**  
Head of Early Years

Article in [EducationTimes.com](https://www.educationtimes.com)

21st July 2023



Wellington is committed to providing an interculturally recognized early years curriculum that provides children with continuity of what went before and progression to what will follow in the next stages of their educational career.

As much learning as possible is play-based, delivered through a balance of teacher and child-initiated projects, and taking place in the classroom spaces and outdoors in nature.

Children's fascinations, passions, interests, and strengths are seen as a starting point to learning by the adults that work with them.

Early Years educators scaffold children's learning with an expertly crafted combination of directed teaching, newly introduced enhancements, and

provocations alongside well-organized continuous provision.

Parents are seen as partners in their child's education and the involvement they bring to their child's journey is crucial.

The Wellington College Early Years curriculum goals are ambitious. They provide a comprehensive overview of the different things we would like children to know and be able to do, from Personal and Social development to Mathematics and English Literacy. We offer an individualized journey for each child, continuously assessing against key developmental benchmarks and offering extra support to help them access the curriculum across all seven areas of learning as they need



it. Our philosophy is an authentic and inspiring approach to early childhood education, which values the child as an individual, rich with wonder and knowledge. The philosophy rides on the coattails of the innate curiosity of children and aims to assist them with understanding their world and who they are in it.

We designed our curriculum with the image of a strong, capable, and resilient child in mind. We celebrate the cultures our children bring and the different languages they speak, and staff use a range of languages when interacting with children. We also place a strong emphasis on helping children learn English. We offer lots of learning opportunities through our project approach for our children to connect to the natural world and human communities locally and across the globe, for example through the National Geographic Explorer Mindset Framework.

There are seven areas of learning and development that shape our educational programme. These are comprised of three prime

areas and four specific areas. The three prime areas are crucial for igniting children's curiosity and enthusiasm for learning and for building their capacity to learn, form relationships, and thrive.

#### **Three prime areas:**

- Personal, social, and emotional development
- Communication and language
- Physical development.

#### **Four specific areas:**

- Literacy
- Mathematics
- Understanding of the world
- Expressive arts and design.

Underpinning all areas of learning and development are the Characteristics of Effective Learning. These are a set of skills divided into three main areas that focus on how children learn.

- Playing and exploring
- Active learning
- Creating and thinking critically.



Our latest article featured in VISTARA Inflight Magazine - July 2023



WELLINGTON  
COLLEGE  
INTERNATIONAL  
PUNE

## Realise your potential

A Premier  
K-12 International School



[pune.wellingtoncollege.in](http://pune.wellingtoncollege.in)



*"We aspire to create a caring, international community that develops well-rounded individuals with strong values and the skills to thrive within an ever-changing global society."*

Dr MURRAY TOD  
Founding Master  
WCI Pune

**An Outstanding School Education of All-round Excellence**  
In Partnership with **Wellington College UK**

Wellington College International Pune (WCI Pune), will be a co-educational school for 800 pupils. The Wellington campus is nestled on the banks of the Mula-Mutha river in Kharadi, Pune, initially providing a first-class holistic education to pupils from Pre-Nursery to Year 9. From August 2024, the school will also open to older year groups, following prestigious international examination curricula.

Our vision for WCI Pune is to offer a world class education, coupling excellence in academic achievement to a progressive holistic outlook. We aim to embrace the Wellington values of **Courage, Respect, Kindness, Integrity** and **Responsibility**, of pertinence to both our international and Indian roots, embedding them in every facet of school life and shaping the global outlook of all our pupils.

Our innovative approach leverages upon the illustrious history and heritage of Wellington College UK, capturing inspirational Wellingtonian attributes and connecting them to the invigorating Pune culture. It is an exciting educational marriage, a fusion of UK practices to the enticing Maharashtra landscape.

WCI Pune offers bright, ambitious and globally-minded pupils an education that is inspiring, transformative, and impactful. We wish to nourish the pastoral development and wellbeing of all in the Wellington community, providing an environment for young learners to grow and develop. Joining a growing partnership of Wellington schools, in the UK, China, Thailand and now India, our pupils, parents and colleagues will be active members of a vibrant international community; we are all united in our pursuit of global excellence and cultivating a rich seam of outstanding young learners.

**Pioneering education  
to serve and help shape  
a better world.**

OPENING SEP '23  
+91.997 997 1258

ADMISSION ENQUIRIES ARE WELCOME  
[admissions.pune@wellingtoncollege.in](mailto:admissions.pune@wellingtoncollege.in)





## Know Our Faculty

Introducing Rashmi Dixon, a highly experienced Early Years educator, joining Wellington College International Pune. With a distinguished background in Early Years education, Rashmi became the EdTech Leader for Wellington College Tianjin Junior School and a dedicated Year 3 teacher. Holding a Master's degree in elementary education from The College of New Jersey and a coveted certificate in the IB Primary Years Programme from the University of Windsor, Rashmi truly advocates inquiry-based learning. We are delighted to welcome Rashmi as part of the Wellington College community.

#KnowOurFaculty



### Meet Rashmi Dixon

Early Years Teacher

With over a decade of experience in Early Years education, including being the EdTech Leader for Wellington College Tianjin, Rashmi brings a wealth of expertise and a passion for inquiry-based learning. We are delighted to welcome Rashmi to our Wellington College community.



# Just how important is an Early Years Education

Article in OMS Pune Times Page 2

23rd July 2023



**Conrad Botha**  
Head of Early Years

## Understanding the importance of early years education

**T**he Wellington College Early Years programme is an innovative and inspiring approach to early childhood education, which values the child as strong, capable, and resilient, rich with wonder, imagination, and knowledge. The programme works on the approach that every child deserves the best possible start in life and the support that enables them to fulfill their potential. The approach rides on the attributes of innate curiosity and aims to assist kids with understanding their world. Building on the successes of Wellington College's global early years footprint, the programme places an emphasis on the values of courage, kindness, respect, responsibility, and integrity, as well as bringing to life the importance of relationships through community involvement.

One of the major attributes of the programme is seen through the sense of ownership children take in understanding their feelings, emotions, and needs. "Every learning day within our early years setting provides learners with support to encourage their intellectual curiosity, problem-solve with confidence, achieve compassionate perspectives, and become self-regulated. Self-regulation isn't just innate; it should be supported and guided by qualified and experienced early years educators working with children and their families," says Conrad Botha, head of the early years programme in the institute's Pune campus.

The institute actively seeks out examples of international best-practice and innovation in education from which the college and its skilled educators can learn. The early years programme, apart from supporting the children in making the right choices and decisions, also allows them to explore and discover things with a curriculum that is created around the child's interests.

Young learners absorb moments that form their education and they continue to be life-long learners. "They grow and develop with vision and hearing pathways coming first, forming the critical foundations for early language skills and higher cognitive functions. A collection of words,



The institute, originally based in the UK, will begin full-fledged operations in Pune soon



The early years programme works on the approach that every child deserves the best possible start in life and support to fulfill their potential

or rather, words and phrases often quadruple between the ages of two and four, becoming more complex over time. This in turn influences brain development to create positive learning behaviours from an early age," adds Botha.

The early years setting is guided by the Early

### THE 4 THEMES OF EYFS THAT INSPIRE THE EARLY YEARS PROGRAMME:

- Uniqueness among children
- Positive Relationships
- Enabling Environments
- Learning and Development

Years Foundation Stage (EYFS) and the English National Curriculum. Botha shares that the approach simply guides the decisions of teachers in how they establish the key elements of early years education and its provision is enriched by international programmes from Italy, Australia and Finland.

The Wellington College Early Years approach has substantial benefits for young children as they journey through their education and become confident and skilled individuals. "Standards in our schools are benchmarked against the English Early Learning Goals and attainment and progress this year exceeds the English National average, while reflecting local languages and the international context in which the school lives. The four themes of the foundation stage guide us on our mission," concludes Botha.

## Wellington 'Outreach' in Pune City

We have been delighted by the impact of our Pune hoarding campaign, seeking to extend our outreach in the city and widen the knowledge of our curriculum. We look forward to having similar campaigns in the forthcoming weeks.



Phoenix Market City



EON IT Park, Kharadi



Aga Khan Bridge, Kalyani Nagar