

# Wellington Monthly



**Pioneering education  
to serve and help shape  
a better world.**

Vol I, Issue V

May 2023

Wellington College International Pune (WCI Pune) was delighted to host some key leaders from the global Wellington family in late-May. In addition to Iain Henderson (Deputy Head Educational Developments and Partnerships) and Fiona Carter (Director of Education for Wellington College International), we also welcomed our incoming Head of Senior School, Mr Iain Sutcliffe (Current Deputy Head CCA of Wellington College UK) and Mrs Julia Sutcliffe (Head of Key Stage 3 in WCI Pune and currently Head of Middle School of Wellington College UK). The Wellington delegates enjoyed a splendid week, finalising the curriculum and shape of the week, and participating in events in the local Pune community. Their visit chimed with a number of educational events and, as the following pages illustrate, great developments in the school campus. We look forward to highlighting all the recent events in our next monthly edition.



# A state-of-the-art campus for collaborative learning

**W**ellington College International Pune, which is nestled on the banks of the Mula-Mutha river in Wagholi, and spread on a land of area 10 acres, is all set to be operational from September 2023. The school's management team believes that teaching students how to interact with the world safely and positively, via technology, is increasingly becoming one of the most significant priorities for schools beyond the curriculum.

Dr Murray Tod, founding master Wellington College International, Pune, informs, "All classrooms will benefit from high quality 75-inch interactive smart boards, allowing more collaborative and illustrative learning into our classrooms, and teacher/student interactivity will be facilitated through both surface go devices (with high level digital inkability) and tablets (for younger years). As with all school matters, our IT network will illustrate the required cyber security and data privacy for all staff and pupils, and CCTV cameras (at vital locations) will monitor and safeguard activities on the school campus. We have constructed an efficient learning environment and free flow outdoor spaces, reflecting our belief in the importance of outdoor learning as integral to the development of the child across the age spectrum. It is fascinating, as the building takes shape, to observe the evolving Wellington imprint, for example in the developing Harkness space in the junior school. Harkness learning, with class discussions taking place around an oval table configuration, will be notable in both the junior and senior schools. Sitting at the table, all members of the class must question, contribute and challenge themselves as part of the



Graphic representation of the school's campus

learning process, leading to developed research and listening skills."

Wellington education also endorses holistic approach and the provision of outstanding sporting and co-curricular opportunities. Children will have access to facilities including two synthetic tennis courts, one pickle ball court, five cricket nets/lanes, a multipurpose playing field with artificial grass turf, a 100m synthetic running track, half Olympic size swimming pool (with learners' pool), a multipurpose hall housing a basketball court and badminton courts, fitness centre, two squash courts, outdoor basketball courts and two volleyball courts. These facilities will be completed in phases. "Furthermore, our belief in the values of a broad and all-encompassing education abounds in the wider field of performing arts, drama and music too, with our 375 seat auditorium (and LED video wall) to act as a splendid forum for some inspirational

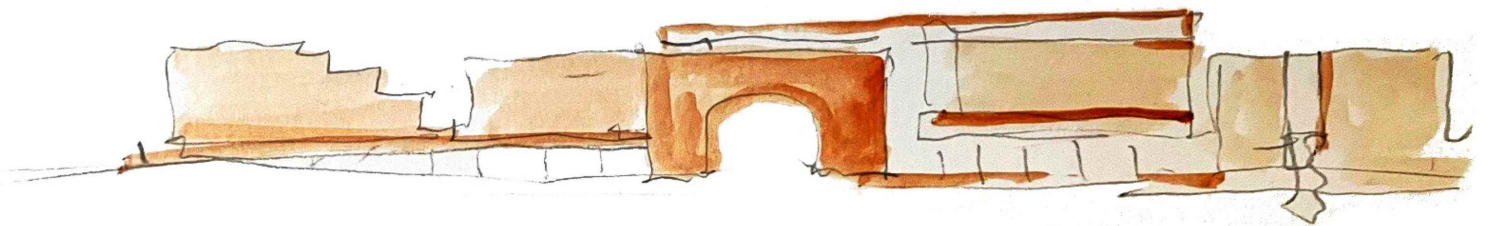
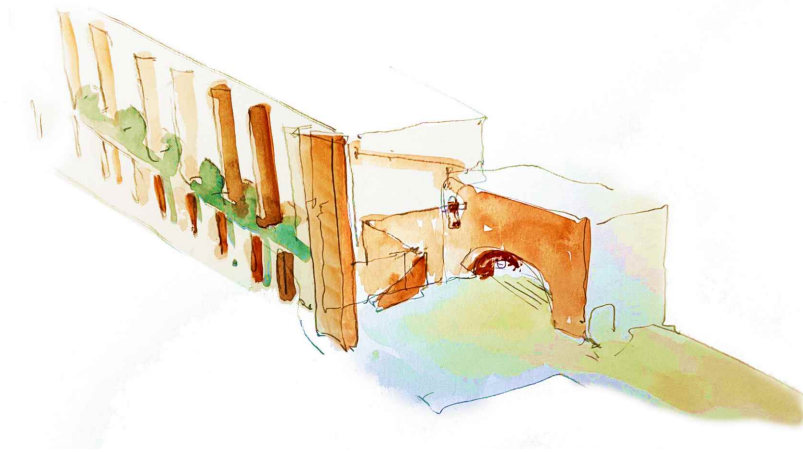
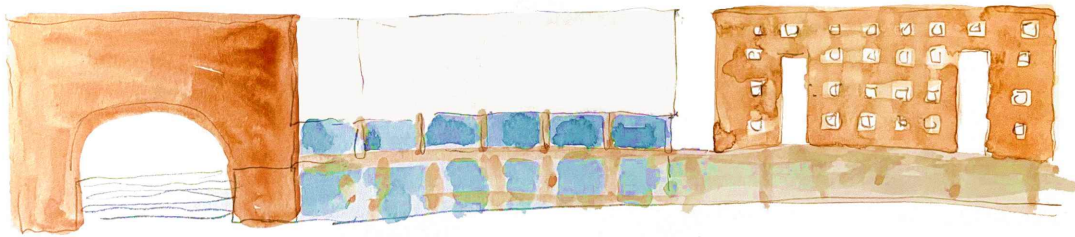
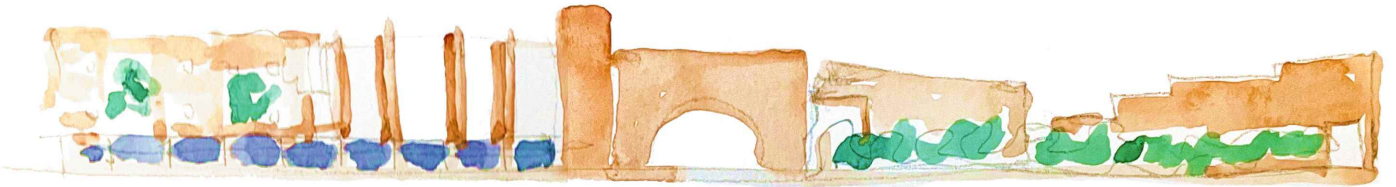
performances," says Dr Murray.

We will strive to add to the local community and the environment," says Dr Murray, and claims, "From the outset, we have prioritised the nature of our intended construction footprint and focused on creating a school campus that will be environmentally friendly and sustainable. Working with the Indian Green Building Council (IGBC) and, following their guidance, the exciting WCI Pune construction is on course to hit high targets in sustainable water practices, energy conservation and solar powered production, EV car and scooter charging stations, indoor environmental quality and ecologically friendly school materials. The school opening in September 2023 is on course to secure an IGBC Platinum rating in the Green New Schools category."

Email: [admissions.pune@wellingtoncollege.in](mailto:admissions.pune@wellingtoncollege.in)  
Contact: 83500 90909



Concept Images of the School Campus  
Courtesy MICA (British Architects and School Designers)



# The Early Years

## - Building the Foundation for Science

Wednesday 10 May, 2023

In the Early Years Programme for WCI Pune, parents are seen as partners in their child's education and the involvement they bring to their child's journey is crucial to the success of life at the college. Our recent community information session, 'Building the Foundations for Science in the Early Years', allowed our already thriving community to come together and experience the vision for our early years education in person.



As one of the guiding principles that underpin our Early Years 'Curriculum Nature' is seen as the Fourth Teacher. From nature, we learn both limits and possibilities. We learn the principles, processes, and patterns that sustain ecosystems, and we learn about the ingredients of healthy living, the dynamics of changing living systems, within the ever-evolving natural world.

## Our latest article featured in VISTARA Inflight Magazine - June 2023

**Pioneering education  
to serve and help shape  
a better world.**

The Wellington family of schools, starting with The Wellington College in the UK, and now operating across China, Thailand and India, can lay claim to be truly pioneering in their educational and holistic approach. In partnership with The Unison Group, a leading education provider in India, Wellington College International Pune (WCI Pune) is delighted to be opening from September 2023. WCI Pune will be a coeducational day and boarding school for 800 pupils between the ages of 2-18, located on a world-class 10-acre campus on the banks of the Mula-Mutha river in Pune.

### **What is the heritage and legacy of Wellington College?**

Founded in the 1850s, and set in 400 acres of beautiful parkland in Berkshire, England, Wellington College UK is one of the world's leading coeducational schools. WCI Pune will also reflect a wonderful fusion of heritage and modernity, with the educational philosophy of the curriculum, facilities, and teaching methods in tune with the challenges of preparing young people for the ever-changing world of the 21st century. The pioneering spirit and heritage of Wellington College will be represented in the Pune school, drawing inspiration from the original 1850s Wellington building in the UK. The splendour of the WCI Pune campus will be awe-inspiring and a projection of the values and heritage of the school.

### **How will Wellington College International Pune demonstrate its cultural ethos, ambition and identity?**

All Wellington Colleges are 'values-led' schools and WCI Pune will continue this fine tradition. We aim for our students to become happy, kind, and responsible global citizens. The five core values of being a Wellingtonian are **Courage, Respect, Integrity, Kindness, and Responsibility**. Our values and ethos will be at the heart of all that we undertake, from the recruitment of high-quality staff to day-to-day decision making. The Wellington Identity encapsulates what makes an education in any of our partnership schools so special: the unique thread which binds together all pupils who walk through our gates. We call it the Wellington Identity and in Pune we want our pupils to be **INSPIRED, INTELLECTUAL, INDEPENDENT, INDIVIDUAL and INCLUSIVE**.

### **How important is the Wellington College global outlook and the strength of the international partnership?**

Wellington College UK's vision, through its schools' network and broader education leadership, is to maximise educational opportunities for young people around the world, with a focus on working together to develop a deep cultural dialogue, respect and understanding. As the Wellington partnership of schools grow, with WCI Pune now the eighth school in the Wellington



WELLINGTON  
COLLEGE  
INTERNATIONAL  
PUNE

College family, we build a connection at all levels through our network, meaning our schools also support each other as an incredible extended resource of world-class expertise and experience. The network of schools further offers unparalleled opportunities for all in the whole global Wellington community from student exchanges to leadership strategic alignment. The perfect epitome of this is represented by the renowned annual education festivals (**EdFests**) held in Wellington schools in the UK, China and Thailand, with WCI Pune to follow suit in due course. Wellington College UK has a clear shared vision to support, connect and grow relationships with both current and future partners in establishing outstanding schools, in premium global locations, that are distinctively and authentically Wellington. From a shared vision each Wellington College International school delivers an exceptional quality education, that is brought vividly to life through a dialogue between inspirational pedagogies and rich cultures. It is tremendously exciting to continue this pioneering and inspirational educational journey in Pune from September 2023!

**Realise**  
your **potential**



[admissions.pune@wellingtoncollege.in](mailto:admissions.pune@wellingtoncollege.in) | [pune.wellingtoncollege.in](http://pune.wellingtoncollege.in)



# Wellbeing

## At the heart of our Early Years Programme at Wellington College International Pune



**Conrad Botha**  
Head of Early Years

Conrad Botha, Head of Early Years, explains how wellbeing and involvement are considered the key elements for his founding team.

“At Wellington College International Pune we believe that a happy, involved child is one who can experience the world at its fullest, and high levels of involvement coupled with high levels of wellbeing is the perfect recipe for deep learning and development.” WCIPEY Curriculum, 2023

For us, play is seen as the perfect state for children to exhibit the Characteristics of Effective Learning, as it is often during play that children have their highest levels of Wellbeing and Involvement, or what is sometimes referred to as the ‘flow state’; the feeling of being intensely focussed and almost losing the sense of time passing by because they are so absorbed in what they are doing. In recent months we have seen the development and implementation of the NCF (National Curriculum Framework for Foundational Stage, 2022) across early years settings in India, making available evidence from global best practices placing play at the core of curricula, pedagogy, time and content rhythms, and the overall experience of the child.

Featured @ Global Educational Supplies & Solutions

<https://www.gesseducation.com/gess-talks/articles/wellbeing-at-the-heart-of-our-new-early-years-at-wellington-college-international-pune>



# Getting To Know You

An Early Years and Junior School  
"Getting to Know You" Session

Tuesday, 23rd May 2023

Time - 3:00PM onwards

Venue - WCI Pune

## Getting To Know You

We held a 'Getting To Know You Session' for parents on Tuesday 23 May, providing a window into the nature of the Wellington experience. The session was a resounding success, with enthusiastic participation from parents who expressed keen interest in the school's unique academic programme and approach.

## Latest Pictures of WCI Pune (May 2023)





# Poona Golf Club

## Pravin Cup



Dr Murray Tod and Conrad Botha at the Poona Golf Club for the Pravin Cup (May 2023)

