

# Wellington Monthly



**Pioneering education  
to serve and help shape  
a better world.**

Vol I, Issue III March 2023



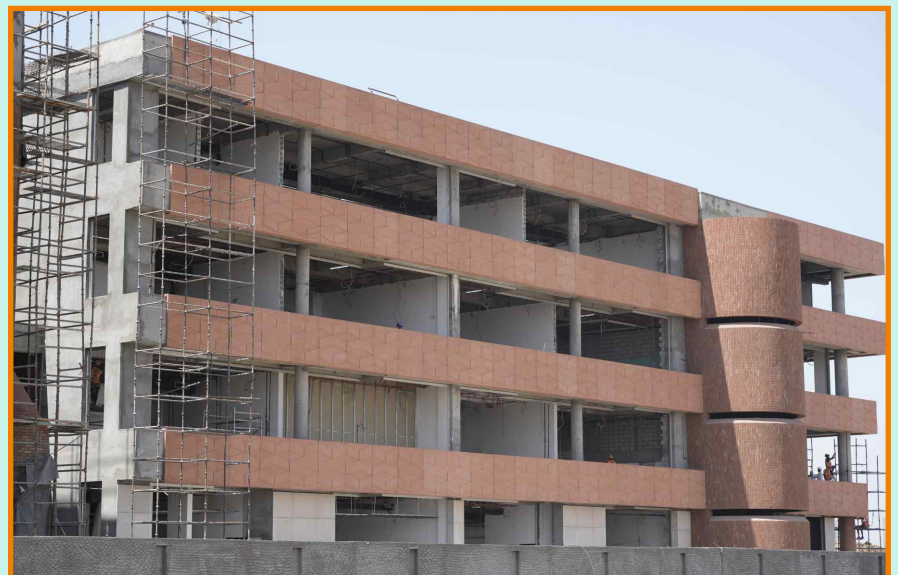
Dear Parents and Colleagues,

Welcome to the March 2023 WCI Pune Newsletter!

As the Founding Master of WCI Pune, I have now worked and lived in India for six months, experiencing all the wonders and joys of Pune and Maharashtra life. For me, it has been a real journey of discovery and my cultural outlook has truly been enhanced by all that I've witnessed. Pune is, quite simply, a wonderful place and I am proud to have been welcomed as part of the community!

My theme this month focuses on the environment and Wellington's cultural, and community, ambitions.

In all our endeavours at WCI Pune, in all that we will strive to do, we have an unrelenting quest to add to the local community and the environment. This objective is at the very heart of the Wellington project and very much in keeping with our overarching ethos. Hence, from the outset, we have prioritised the nature of our intended construction



# Wellington Monthly

footprint and focused on creating a school campus that will be environmentally friendly and sustainable. The superb site and location of WCI Pune, on the banks of the Mula-Mutha river, is certainly a supreme advantage; and these pictures illustrate that aptly.



However, one needs to be more aspirational to be truly educationally sustainable. Working with the Indian Green Building Council (IGBC), and following their guidance, the exciting WCI Pune construction is on course to hit high targets in sustainable water practices, energy conservation, indoor environmental quality and ecologically friendly school materials. Indeed, for every indicator provided by IGBC, the school opening in September 2023 is on target to secure an IGBC Platinum rating in the Green New Schools category – our intended aim. This would be a superb achievement and I am delighted that we remain committed, and on track, to accomplish it. We very much hope that our future parental and pupil body will be fully supportive of this positive stance.

Of course, the creation of a new school building is significant in so many other ways too. Perhaps the most tangible, at face value, is its impact upon an audience and there is no doubt that the splendour and magnificence of the WCI Pune campus will be awe-inspiring. However, a new building is also a projection of the values and heritage of the school and it is wonderful to see how our Pune site reflects the Wellington cultural ethos and legacy, in its dynamic architecture and impressive red-brick construction. It is 'authentically Wellington', within an overt Pune setting, and I hope this sense of cultural belonging is evident for all in our school community.

Nevertheless, a new school building, no matter its greatness, should be a rich repository for exceptional academia, facilitating the provision of outstanding learning and teaching across all years. To that end, we enjoyed a lively parental session at the school in mid-March, focusing on the opportunities of both IGCSE and MYP curricula, and why WCI Pune will pursue the IGCSE and IBDP pathway for our older pupils. It is fascinating, as the building takes shape, to observe the evolving Wellington imprint, for example in the developing Harkness space in the Junior school. Harkness learning, with class discussions taking place around an oval table configuration, will be notable in both the Junior and Senior schools at WCI Pune and is a key feature of a broader Wellington education. Sitting at the table, all members of a Harkness class must question, contribute and challenge

## MYP vs IGCSE - A Comparative Guide



**Dr Murray Tod**  
Founding Master  
WCI Pune

**Saturday, 18th March, 2023**  
10.00 am to 11.30 am  
Wellington College International Pune  
Wagholi

**RSVP**  
admissions.pune@wellingtoncollege.in  
Call 8350 090909 to register your interest  
Bookings by appointment only

# Wellington Monthly

themselves as part of the learning process, leading to developed research and listening skills. The creation of our new campus allows one to embed Harkness learning into the fabric of the school from the inception; in fact, it is a wonderful exponent of the power of blending high quality construction to academic aspiration.



Picture Courtesy: Wellington College International Bangkok

Similarly, with sporting opportunity abundant in the planning of the WCI Pune campus, we have started to forge superb partnerships with the wider Pune network and community. We are now the proud sponsors of the Monthly Medal event at the prestigious Poona Golf Club and we are eagerly anticipating the next event in late-April. To align with such a well established institution as the Poona Club is a real honour and I have no doubt we will develop even stronger links, with pupil opportunities too, in the months ahead.

We are really excited for the next month, as WCI Pune inches closer towards the first academic term in September 2023. In April, in addition to our participation in another Monthly Medal Round at the Poona Golf Club, we will run further “Getting to know Wellington” sessions conducted by the Heads of Schools. Furthermore, I am keenly anticipating delivering a parental session on “Opportunity and Aspiration: A Masters reflection on a Wellington Education” on Saturday, the 22nd of April. We also look forward to welcoming the return to Pune of Scott Bryan (Director WCI) and Fiona Carter (Director of Education - Primary and EYFS) in late April, and we will host a number of parental information events whilst they are here.

Therefore, as the weather warms still further, the countdown to the school opening in September 2023 is truly upon us. It is a hugely exciting time to be a Founding Master in the cultural brilliance of Pune!

With very best wishes,

**Dr Murray Tod**

Founding Master

Wellington College International Pune

